



INDOFINE Chemical Company, Inc.

121 Stryker Lane, Bldg. 30, Suite 1 • Hillsborough, NJ 08844 • U.S.A.

Phone: (908) 359-6778 • FAX: (908) 359-1179

website: www.indofinechemical.com

e-mail: chemical@indofinechemical.com

CERTIFICATE OF ANALYSIS

Cat No.: 17-078

Product: **CHROMONE-2-CARBOXYLIC ACID**

CAS Number: [4940-39-0]

Lot Number: 99112

Chemical Formula: C₁₀H₆O₄

Molecular Weight: 190.15

Melting Point: 260-261°C

Appearance: White fluffy powder

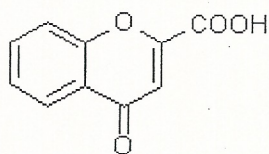
TLC: Chloroform:Methanol:AcOH (8.5:1.5:0.1)

Solubility: Soluble in DMSO

NMR Spectrum: Enclosed

Storage: Cool dry place

Purity(HPLC): 99.34%





INDOFINE Chemical Company, Inc.

121 Stryker Lane, Bldg. 30, Suite 1 • Hillsborough, NJ 08844 • U.S.A.

Phone: (908) 359-6778 • FAX: (908) 359-1179

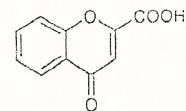
website: www.indofinechemical.com

e-mail: chemical@indofinechemical.com

HPLC ANALYSIS

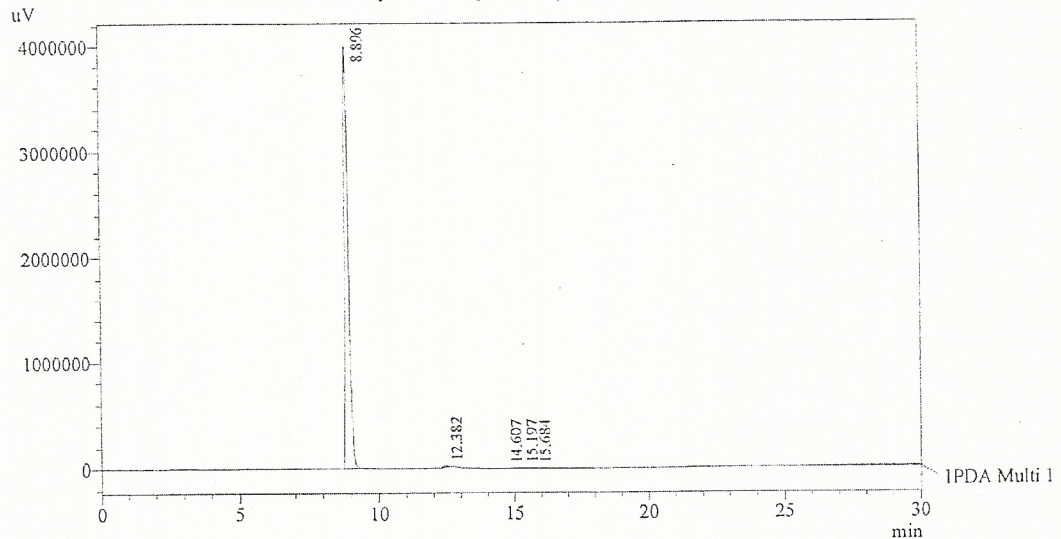
Acquired by : Sanjeev
Sample Name : Chromone-2-carboxylic acid
Sample ID : Lot No:-99112
Injection Volume : 20 uL
Data Filename : 251212L.lcd
Method Filename : Linear Gradient.M.lcm

Catalog no.: 17-078
Product name: Chromone-2-carboxylic acid
Lot No.: 99112



Column : LUNA C-18(2), (250mm x4.6mm 5.0μ)
Flow : 1.000 mL/min.
Mobile Phase : A(0.05% TFA in water) B(Acetonitrile)
0.01 90 10
12.0 10 90
20.0 10 90
23.0 90 10
30.0 90 10

Chromatogram
Chromone-2-carboxylic acid D:\promonence\Data\2012\DEC-2012\251212L.lcd



1 PDA Multi 1 / 240nm 4nm

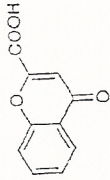
PeakTable

Peak#	Name	Ret. Time	Area	Area %	Relative Retention Time
1	Chromone-2-carboxylic acid	8.896	36963577	99.34	1.00
2	RT:12.382	12.382	183356	0.49	1.39
3	RT:14.607	14.607	6478	0.02	1.64
4	RT:15.197	15.197	45399	0.12	1.71
5	RT:15.684	15.684	11834	0.03	1.76
Total			37210644	100.00	



INDOFINE Chemical Company, Inc.
 121 STRYKER LANE
 BLDG. 30, SUITE 1
 HILLSBOROUGH, NJ 08844

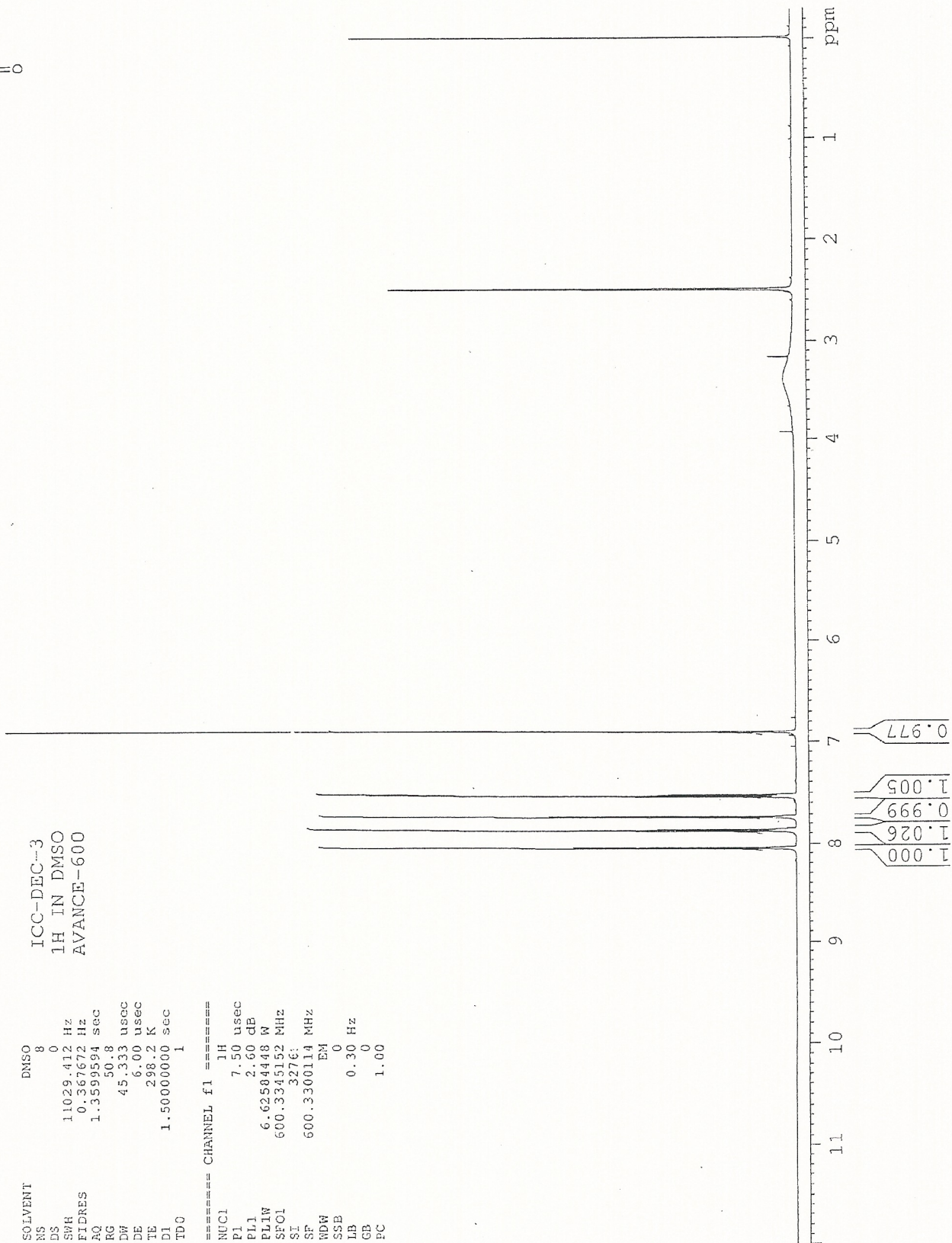
Catalog no.: 17-078
 Product name: Chromone-2-carboxylic acid
 Lot No.: 99112



SOLVENT DMSO
 NS 8
 DS 0
 SWH 11029.412 Hz
 FIDRES 0.367672 Hz
 AQ 1.3599594 sec
 RG 50.8
 DW 45.333 usec
 DE 6.00 usec
 TE 298.2 K
 D1 1.50000000 sec
 TDC 1

ICC-DEC-3
 1H IN DMSO
 AVANCE-600

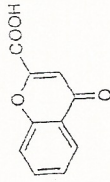
===== CHANNEL f1 =====
 NUC1 1H
 P1 7.50 usec
 PL1 2.60 dB
 PL1W 6.62504448 W
 SFOL 600.3345152 MHz
 SI 3276:
 SF 600.3300114 MHz
 NDW EM
 SSB 0
 LB 0.30 Hz
 GB 0
 FC 1.00





INDOFINE Chemical Company, Inc.
 121 STRYKER LANE
 BLDG. 30, SUITE 1
 HILLSBOROUGH, NJ 08844

Catalog no.: 17-078
 Product name: Chromone-2-carboxylic acid
 Lot No.: 99112



SOLVENT DMSO
 NS 8
 DS 0
 SRH 11029.412 Hz
 FIDRES 0.367672 Hz
 AQ 1.3599594 sec
 RG 50.8
 DW 45.333 usec
 DE 6.00 usec
 TE 298.2 K
 D1 1.50000000 sec
 TD0 1

===== CHANNEL f1 =====
 NUC1 1H
 P1 7.50 usec
 PL1 2.60 dB
 PLLW 6.62580448 W
 SFO1 600.3345152 MHz
 SI 32768
 SF 600.3300114 MHz
 EM 0
 LB 0.30 Hz
 SSB 0
 GB 0
 PC 1.00

